

Scan to: 13/0860/REM

Doc type: DGS -  
Landscape Master Plan

Return to: App Support

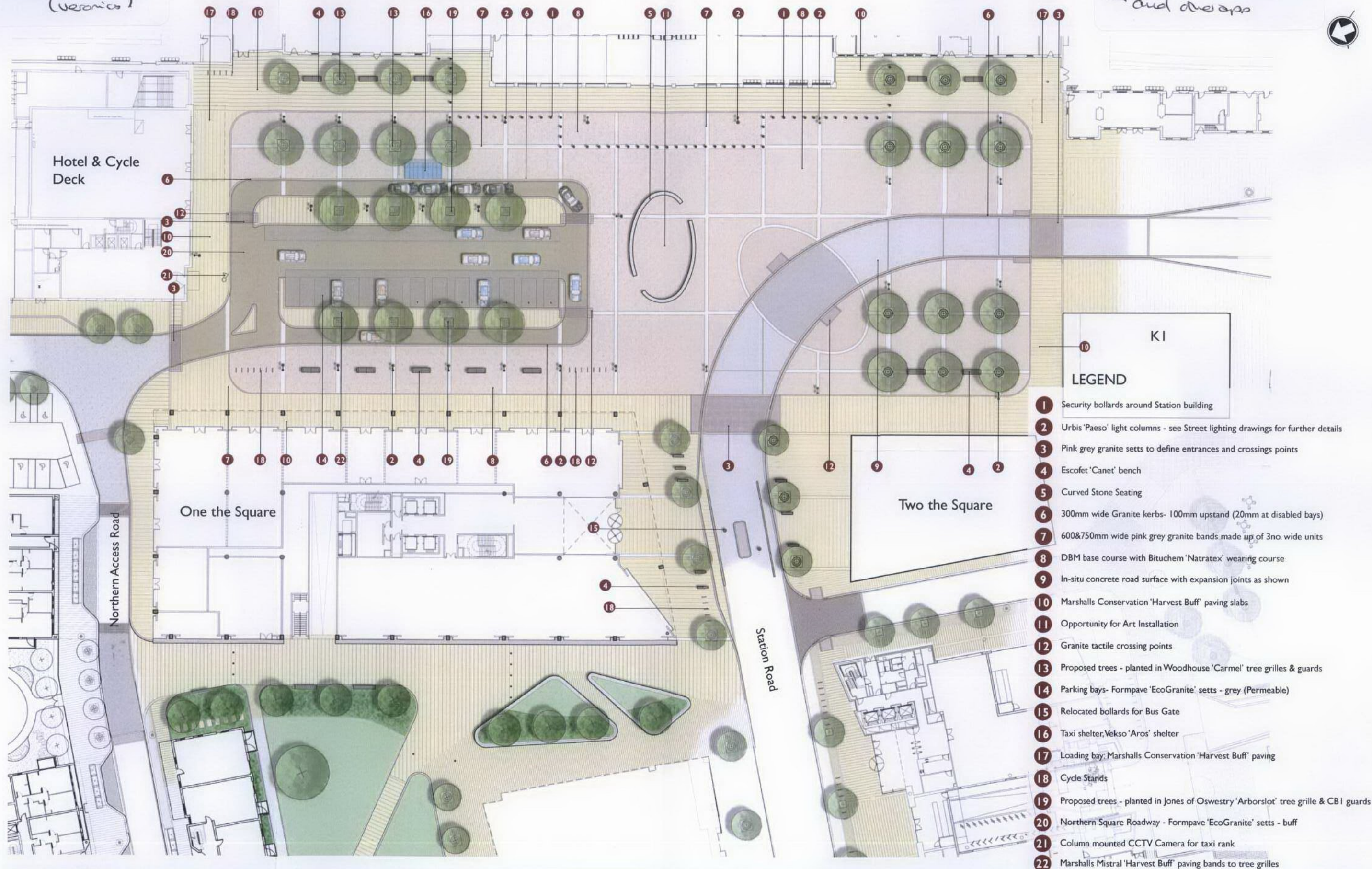
(Veronica)

Scan to: 08/0266/OUT

Doc type: Discharge Draw

Return to:

and draw app



K1

**LEGEND**

- 1 Security bollards around Station building
- 2 Urbis 'Paeso' light columns - see Street lighting drawings for further details
- 3 Pink grey granite setts to define entrances and crossings points
- 4 Escofet 'Canet' bench
- 5 Curved Stone Seating
- 6 300mm wide Granite kerbs- 100mm upstand (20mm at disabled bays)
- 7 600&750mm wide pink grey granite bands made up of 3no. wide units
- 8 DBM base course with Bituchem 'Natrutex' wearing course
- 9 In-situ concrete road surface with expansion joints as shown
- 10 Marshalls Conservation 'Harvest Buff' paving slabs
- 11 Opportunity for Art Installation
- 12 Granite tactile crossing points
- 13 Proposed trees - planted in Woodhouse 'Carmel' tree grilles & guards
- 14 Parking bays- Formpave 'EcoGranite' setts - grey (Permeable)
- 15 Relocated bollards for Bus Gate
- 16 Taxi shelter, Vekso 'Aros' shelter
- 17 Loading bay: Marshalls Conservation 'Harvest Buff' paving
- 18 Cycle Stands
- 19 Proposed trees - planted in Jones of Oswestry 'Arborslot' tree grille & CBI guards
- 20 Northern Square Roadway - Formpave 'EcoGranite' setts - buff
- 21 Column mounted CCTV Camera for taxi rank
- 22 Marshalls Mistral 'Harvest Buff' paving bands to tree grilles